



# Fieldwalking in Big Leas, Manor Farm, Marcham

## The Pottery



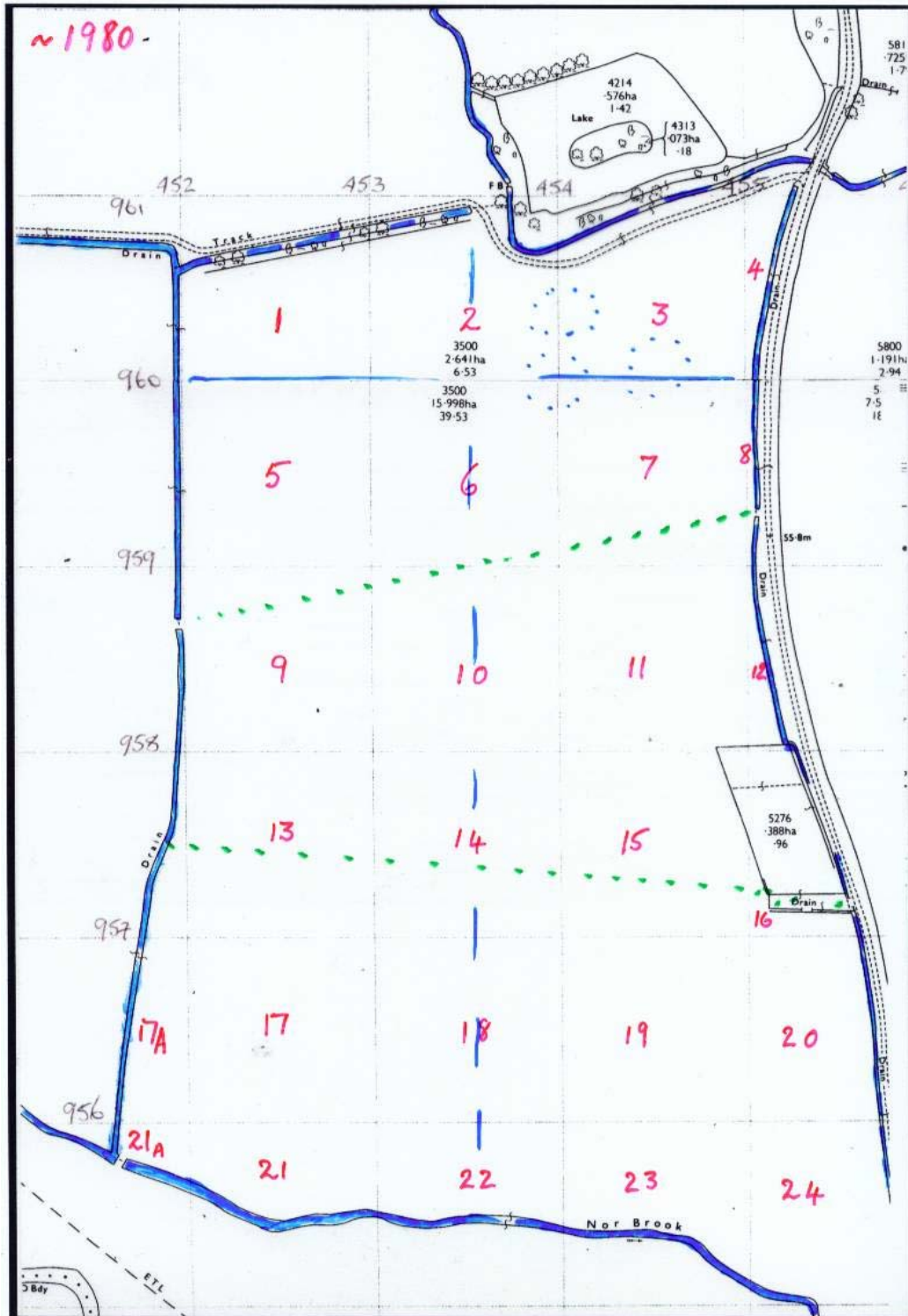
Winter 2005/6



## Table of Contents

The identification and recording process .....	4
Enclosure Map .....	5
Location by Block and 10m line .....	6
Total sherds recovered by number and weight .....	6
Spreadsheet for All Blocks .....	<b>Error! Bookmark not defined.</b>
Block 1 .....	8
Block 2 .....	8
Block 3 .....	9
Block 5 not seen by Maureen Mellor .....	10
Block 6 .....	11
Block 9 .....	12
Block 10 .....	14
Block 13 .....	16
Block 14 .....	18
Block 17 .....	19
Block 17A/X .....	19
Block 18 .....	20

## The identification and recording process



On November 4<sup>th</sup> 2006 Maureen Mellor identified the laid out contents of plastic bags corresponding to the items picked up on a 10m length of field during walking  
The field was divided into 100m x 100m blocks, and each block into 10m lines

**Enclosure Map**



## Location by Block and 10m line

Pre-printed analysis sheets were designed and printed by Terry Stopps. The pottery classes used were

- Pre Roman
- Roman
- Medieval
- Post Medieval

The finds had been bagged by block number, and with a North and East grid reference. The block number and grid number of each walk had been recorded on each bag. Each bag which contained pottery was opened and its contents placed out for examination. Recording sheets were filled out for each block, the number of sherds and the weight being recorded in the correct column across the row on the sheet. Totals for each block by class, by weight and by sherd number were then calculated and recorded on the sheet

Later each blocks sheets were used to go through the finds again, and interesting and highlighted pieces were put in a new finds bag identified by block, N and E grid reference, and a Reference collection number inserted on a slip in the bag, and recorded as below

### ***Total sherds recovered by number and weight***

BLOCK	Pre- ROMAN		ROMAN		MEDIEVAL		POST MEDIEVAL		
	No of sherds	Wt in grams	No. of sherds	Wt in grams	No. of sherds	Wt in grams	No. of sherds	Wt in grams	
1			19	245	4	20	0	0	
2			43	216	3	55	8	90	
3			53	525	6	45	30	270	
4									
5			29	360	0	0	7	110	
6			33	199	1	5	6	50	
7									
8									
9	1	5	7	75	10	110	64	722	
10			10	50	12	110	87	946	
11									
12									
13			6	70	15	160	108	243	
13A			1	5			3	25	
14			4	40	3	15	56	492	
17			1	5	1	25	65	1200	
17A/X			1	5	1	5	22	375	
<b>Total</b>	<b>1</b>	<b>5</b>	<b>207</b>	<b>1795</b>	<b>55</b>	<b>558</b>	<b>446</b>	<b>4523</b>	709 sherds
									6876 grms
<b>Average</b>		<b>5g</b>		<b>9 g</b>		<b>10g</b>		<b>10g</b>	

Spreadsheet for All Blocks
----------------------------

Block	Pre-Roman		Roman		Medieval		Post Medieval	
	No sherds	Wt grm	No sherds	Wt grm	No sherds	Wt grm	No sherds	Wt grm
1			19	245	4	20	0	0
2			43	216	3	55	8	90
3			53	525	6	45	30	270
4								
5			29	360	0	0	7	110
6			33	199	1	5	6	50
7								
8								
9	1	5	7	75	10	110	64	722
10			10	50	12	110	87	946
11								
12								
13			6	70	15	160	108	243
13A			1	5			3	25
14			4	40	3	15	56	492
17			1	5	1	25	65	1200
17a			1	5	1	5	22	375
<b>Total</b>	<b>1</b>	<b>5</b>	<b>207</b>	<b>1795</b>	<b>56</b>	<b>550</b>	<b>456</b>	<b>4523</b>

**Block 1**

Numbers 1.16-1.28 were picked up by visiting Princes Risborough club with Roger Gelder

<b>Ref Number</b>	<b>Location</b>	<b>Description</b>	<b>Notes</b>	<b>Photo</b>	<b>Write up</b>
11	100 I	R foot of beaker	With terry stopps		
12	98 B	R Samian with rim	“ ditto “		
13	98 C	R Samian	Terry Stopps		
14	99 C	R Samian	Terry Stopps		
15	98 E	Late Saxon	Terry Stopps		
1.16	96 G	R body sherd	Penny Cookson		
1.17	96 A	?M body sherd pale colour wash inside	“		
1.18	93 F	?M unglazed			
1.19	99 B	R rim with ridges			
1.20	99 I	M partial glaze pink fabric			
1.21	99 E	R body sherd			
1.22	100 F	M thick biscuit body			
1.23	100 G	R little abraded Samian			
1.24	100 B	R colour coat dark brown			
1.25	100 E	R greyware			
1.26	97 H	R small vessel biscuit fine			
1.27	91 H	Pre-R ? rough unglazed			
1.28	97 E	R rim small fine vessel			

**Block 2**

<b>Ref Number</b>	<b>Location</b>	<b>Description</b>	<b>Notes</b>	<b>Photo</b>	<b>Write up</b>
26	94 A	R greyware big	TS or RG		
27	95 C	R greyware big	TS or RG		
28	99 D	R mortarium	TS or RG		
?	100 E	2 R			



**Block 3**

Ref No	Location	Description	Notes	Photo	Write up
31	96 G	Roman rim			
32	3 N	Hypocaust			
33	96 I	Roman samian			
34	98 D	Late Saxon	Small shelly frag		
35	97 H	R greyware			
36	97 H	R Samian			
37	92 H	R Samian			
38	92 H	R rim			
39	94 J	R Tegulla ?			
3.10	94 J	R base of bowl	? colour		
3.11	94 F	PM glazed			
3.12	Block 2E	R rim greyware			
3.13	98 H	R base beaker			
3.14	95 A	R stamped? Samian			
3.15 – 3.23	92 G	R rim, 1 Samian, 1 slipware			
3.24	98 D	PM glazed			
3.25 – 3.27	93F	R rim, gritty fabric, 2x mortaria?			
3.28	94 B	PM colour glazed			
3.29	95 F	PM colour glazed			
3.30	96 C	PM nice big piece			
3.31	99 F	PM really nice big piece			
3.32	96 A	PM ceramic material glazed			
3.33 – 3.37	93 C	5 pieces R, 1 Samian, 1 base greyware, 1 rooftile with hole			
3.38 – 3.39	98 F	R grey rim and body sherd			
3.40 – 3.43	94 E	R small Samian, 3PM, 1M			
3.44 – 3.45	99 B	1 R Samian, 1 R greyware			
3.46 – 3.47	92 I	2 M unglazed, 1 with rim			
3.48 – 3.50	92 F	2 R rim, 1 R handle			
3.51	100 C	R rim			
3.52	95 G	R body sherd			
3.53 – 3.55	95 D	1 M rim, 2 PM glazed			
3.56	95 H	R samian with rim			
3.57	93 E	R grey with machine grooves			
	98 E	R greyware			

**Block 5 not seen by Maureen Mellor**

Ref No	Location	Description	Notes	Photo	Write up
51	107 F	R? rim			
52	104 G	1 R Samian, 1 greyware rim			
53	108 C	R rim greyware			
54	107 G	2 R bodysherd, same as 108C? sand tempered			
55	109 F	R shaped body sherd, sandwich fabric Oxford reduced?			
56	109 D	1 R white clay body sherd thin, 1 sand/ironstone tempered body sherd			
57	109 J	2 R burnt CBM ?hypocaust, 1 R greyware showing ridges			
58	109 A	R v abraded Samian			
59	109 C	M lovely green glaze shallow dish			

**Block 6**

Ref No	Location	Description	Notes	Photo	Write up
6.1	102 E	R rim			
6.2	109 D	a) PM base & contrary wheel marks b) PM brown glaze			
6.3	102 D	?R ?M rim			
6.4	107 A	a) PM base glazed both sides b) R greyish?			
6.5	110 B	M green glaze ?base			
6.6	109 A	R Samian			
6.7	104 E	3 R a) worn Samian b) and c) quartz fabric			
6.8	109 B	R foreign containing mica			
6.9	105 A	R foreign containing mica ?bowl base			
6.10	110 E	R rim			
6.11	109 E	PM			
6.12	107 C	R base of small bowl			
6.13	102 A	M c12-13 <sup>th</sup> ?rim of mug			
6.14	103 C	2 R a)?Oxford red b) grey tiny bit mica + grit	Labelled as 103 B		
6.15	102 C	M unglazed			
6.16	106 C	R ?lug ?slipware			
6.17	104 B	3 R a)Samian b)pierced grey c)slipware			

**Block 9**

Ref No	Location	Description	Notes	Photo	Write up
9.1	119 I	PM small piece Blue&White			
9.2	119 A	PM nice green glaze inside			
9.3	119 G	PM small piece white thin glazed			
9.4	119 E	M grit? Tempered rim			
9.5	118 C	M small frag			
9.6	“	?PM nice red hard glaze			
9.7	118 B	?same as 96			
9.8	“	PM big blue&white farmware?			
9.9	Unstrat	PM Fulham ware hard glaze with stamped impression	RG 11/12/06		
9.10	120 D	M small piece orange			
9.11	120 B	PM yellow glaze + pattern handle			
9.12	120 I	M pale fine body sherd			
9.13	120 E	M base with colour			
9.14	“	PM hard red glaze inside			
9.15	116 J	Rejected as scraps only	Not put in		
9.16	116 G	?M yellow glaze			
9.17	116 F	PM white glaze			
9.18	116 E	PM red glaze			
9.19	“	Same as 918			
9.20	116 D	PM brown/green glaze in/out			
9.21	116 C	PM red and grey sandwich fabric			
9.22	116 A	PM same as 920?			
9.23	114 I	M ?colour outside?			
9.24	112 G	PM glazed green base			
9.25	112 C	PM red glazed, same as 918?			
9.26	112 E	2 M glazed ?colour			
9.27	113 I	PM rim ?colour ?same as 924?			
9.28	113 J	PM base of 927?			
9.29	113 A	PM white			
9.30	“	PM blue&white			
9.31	117 G	PM blue&white, white paste			
9.32	116 J	R big 75g			
9.33	“	PM greenish glaze			

AAAHS Occasional Paper No 2

9.34	117 F	PM rim red glaze		RG 10/12/06	
9.35	111 J	R rim			
9.36	“	M rim			
9.37	“	M rim			
9.38	111 A	PM green glaze			
9.39	“	PM hard white bathroom glaze			
9.40	111 B	PM dog bowl? Greenish glaze			
9.41	117 E	Pre Roman black		RG 10/12/06	
9.42	117 F	R abraded ?reduced Oxford?			
9.43	117 J	M/PM clay pipe bowl marked with X			
9.44	116 E	PM clay pipe bowl with thumb print		RG 10/12/06	
9.45	114 G	?R Samian			
9.46	114 D	M? green glaze	“Tudor green”		
9.47	“	Patterned clay pipe bowl			
9.48	“	?R abraded dog bowl			

**Block 10**

Ref No	Location	Description	Notes	Photo	Write up
10.1	118 C	M			
10.2	118 C	M			
10.3	118 C	M			
10.4					
10.5	117 B	PM			
10.6	117 B	PM			
10.7	120 D	M 12-13 C			
10.8	120 D	PM			
10.9	120 A	PM			
10.10	120 A	PM			
10.11	120 B	R			
10.12	120 B	R or M			
10.13	115 D	PM			
10.14	115 A	M brown glaze			
10.15	113 E	R			
10.16	113 E	M			
10.17	113 E	PM			
10.18	113 E	PM			
10.19	113 B	R			
10.20	113 C	R			
10.21	114 A	PM			
10.22	114 E	PM ? Fulham Ware?			
10.23	114 E	PM			
10.24	114 E	PM			
10.25	114 D	R			
10.26	116 D	M			
10.27	116 C	M			
10.28	116 C	M			
10.29	116 C	M			
10.30	116 C	PM			
10.31	116 D/C?	M			
10.32	116 C	PM			
10.33	116 C	PM			
10.34	116 C	PM			
10.35	116 A	PM			
10.36	112 A	R			
10.37	111 A	PM red glazed			
10.38	111 A	PM rim red glaze			
10.39	119 B	PM red glaze rim			
10.40	119 B	M red glazed body			
10.41	119 C	M body thick pale coarse			

AAAHS Occasional Paper No 2

10.42	119 C	R fine body sherd			
10.43	111 B	PM big dark green glaze			
10.44	119 D	PM red glazed same as 10.37-10.40			
10.45	119 D	R greyware rim			
10.46	119 D	R greyware body			

**Block 13**

Ref No	Location	Description	Notes	Photo	Write up
13.1	127 D	1 PM			
13.2	127 D	PM			
13.3	127 J	PM			
13.4	127 H	PM			
13.5	128 E	PM			
13.6	128 E	PM			
13.7	128 G	PM			
13.8					
13.9					
13.10					
13.11	130 G	PM			
13.12	130 G	PM			
13.13	130 G	PM			
13.14	130 G	PM			
13.15	130 G	PM			
13.16	130 E	M			
13.17	128 I	M St Neots 10-11 C			
13.18					
13.19	128 D	M			
13.20	129 D	PM			
13.21					
13.22	128 J	M /			
13.23	121 H	M			
13.24	121 H	PM			
13.25	121 E	PM			
13.26	121 E	PM			
13.27					
13.28	121 I	M			
13.29	121 I	PM			
13.30	121 I	PM			
13.31					
13.32	121 C	PM			
13.33	121 C	PM			
13.34					
13.35	121 B	PM	See also sheet 19		
13.36					
13.37	124 D	R			
13.38	124 D	PM			
13.39	124 D	PM			
13.40	129 E	?M or is it the PM piece?			
13.41	129 F	M			
13.42					



13.43	129 J	M			
13.44	129 I	M			
13.45					
13.46					
13.47	125 G	R			
13.48	126 E	R			
13.49	126 H	PM			
13.50	126 I	PM			
13.51	126 I	PM			
13.52	126 G	PM			
13.53	129 H	PM			
13.54	129 H	PM			
13.55	129 H	PM			
13.56	121 G	PM			
13.57	121 G	PM			
13.58	122 B	PM red glaze rim			
13.59	122 C	PM 1 green, 1 red			
13.60	122 E	R rim			
13.61	122 E	PM			
13.62	122 I/E ?	PM			
13.63	122 E	PM rim			
13.64	122 E	PM			
13.65	122 F	PM			
13.66	122 F	PM			
13.67	122 G	PM green glaze			
13.68	122 H	PM			
13.69	130 I	PM red			
13.70	130 I	PM red			
13.71	130 I	PM green			
13.72	122 J	M spotty copper glaze			
13.73	122 J	Roman fine ware sandwich			
13.74	123 B	PM ?M greenish low temp			
13.75	123 B	PM Victorian hard paste grey			
13.76	123 C	PM green even glazed			
13.77	123 D	PM? Big red grog tempered no glaze	???? grog temp		
13.78	123 D	PM fine red glazed			
13.79	123 G	PM red glazed fine			
13.80	123 G	PM red glazed			
13.81	123 I	PM rim very abraded			
13.82	123 F	PM rim hard red glaze			

**Block 14**

Ref No	Location	Description	Notes	Photo	Write up
14.1	129 D	M Fulham Ware excise stamp	***		
14.2	129 D	PM gree/yellow glazed			
14.3	130 C	PM internal glaze base			
14.4	122 E	M/ PM ? Fulham Ware			
14.5	122E	Fulham Ware			
14.6	Last line D	PM red glazed large rim			
14.7	130 E	PM handle			
14.8	130 E	PM green glaze			
14.9	130 E	PM cream&brown rim			
14.10	128 E	PM green glaze+pattern			
14.11	128 E	PM green			
14.12	128 E	PM green			
14.13	Last line C	R twisted neck jug?			
14.14	Last line B	M flat dish abraded			
14.15	Last line B	PM brown glaze rim			
14.16	124 D	PM pretty small pot rim			
14.17	121 C	R abraded			
14.18	124 C	PM twisted glazed ?jug			
14.19	130 D	M green glaze			
14.20	124 E	PM rim			
14.21	126 A	PM jug handle?			
14.22	126 A	PM rim			
14.23	129 A	PM bowl rim			
14.24	129 A	PM brown glaze rim grooved			
14.25	128 C	PM red glaze inside rim			
14.26	122 B	PM? Red glaze with stamp	* what stamp?		
14.27	123 E	PM? Fulham ware all brown			
14.28	123 B	R abraded			
14.29	126 B	PM green glaze + pattern			
14.30	126 B	PM cream rim ?farmhouse			
14.31	128 D	PM dark footed glazed in/out			
14.32	122 C	PM yellow glaze in groove			
14.33	129 C	R			
14.34	129 C	PM cheese? dish			
14.35	126 D	PM cheese? Dish			

**Block 17**

Ref No	Location	Description	Notes	Photo	Write up
17.1	136 G	PM rim			
17.2	136 G	PM rim			
17.3	131 J	PM yellow glaze rim ?dish			
17.4	133 H	PM green glaze fine sandwich fabric			
17.5	140 D	PM shaped internal glaze			
17.6	135 I	PM glazed + ?fish pattern			
17.7	132 J	?PM base of jug? Mug?			
17.8	132 J	R abraded			
17.9	132 G	PM orange glazed bowl rim			
17.10	135 H	R rim shell tempered			
17.11	135 H	PM glazed brown ?flask			

**Block 17A/X**

Ref No	Location	Description	Notes	Photo	Write up
17x.1	138 J	?PM large rim trace of glaze	Loose in 135J bag		
17x.2	138 D	PM large red glaze rim			
17x.3	138 D	M unglazed dish base			
17x.4	140 C	PM red abraded rim internal glaze			
17x.5	132 I	PM red yellow glaze			
17x.6	132 D	?PM glazed tile			
17x.7	134 B	M ? Saxon fragment			
17x.8	134 C	R Samian small			
17x.9	137 I	PM small dark brown glaze			
17x.10	17 A	R rim abraided			
17x.11	17 A	?M green glaze abraded			
17x.12	17 A	PM blue/white willow patt			
17x.13	131 I	M green			
17x.14	135A-J	?R wheel turned grooves slip			
17x.15	135 F	?R mortarium? Grits			
17x.16	131 G	?R courseware			
17x.17	132 E	?R fine orange rim			

17x.18	137 J	R sandwich fine			
--------	-------	-----------------	--	--	--

**Block 18**

Ref No	Location	Description	Notes	Photo	Write up
18.1	138 E	PM glazed ?dog dish flat			
18.2	138 A	PM brown glazed handle			
18.3	131 C	?PM green glaze blotchy			
18.4	131 A	PM green glaze big rim			
18.5	139 B	PM big rim internal orange glaze			
18.6	135 D	PM red glaze both sides holes ?colander			
18.7	134 E	PM green glaze big base dish			
18.8	134 D	PM red glaze dish base			
18.9	134 D	PM rim of red glaze dish			
18.10	136 C	PM grey glaze earthenware rough			
18.11	136 E	PM Fulham ware			
18.12	136 E	PM cream abraded rim			
18.13	136 E	PM cream abraded rim			
18.14	132 E	PM green glaze			
18.15	140 E	PM red glaze rim			
18.16	140 E	PM brown glaze grooved			